

# Rules and regulations racetrack 2021

## CM.com Circuit Zandvoort

(Version June 2021)



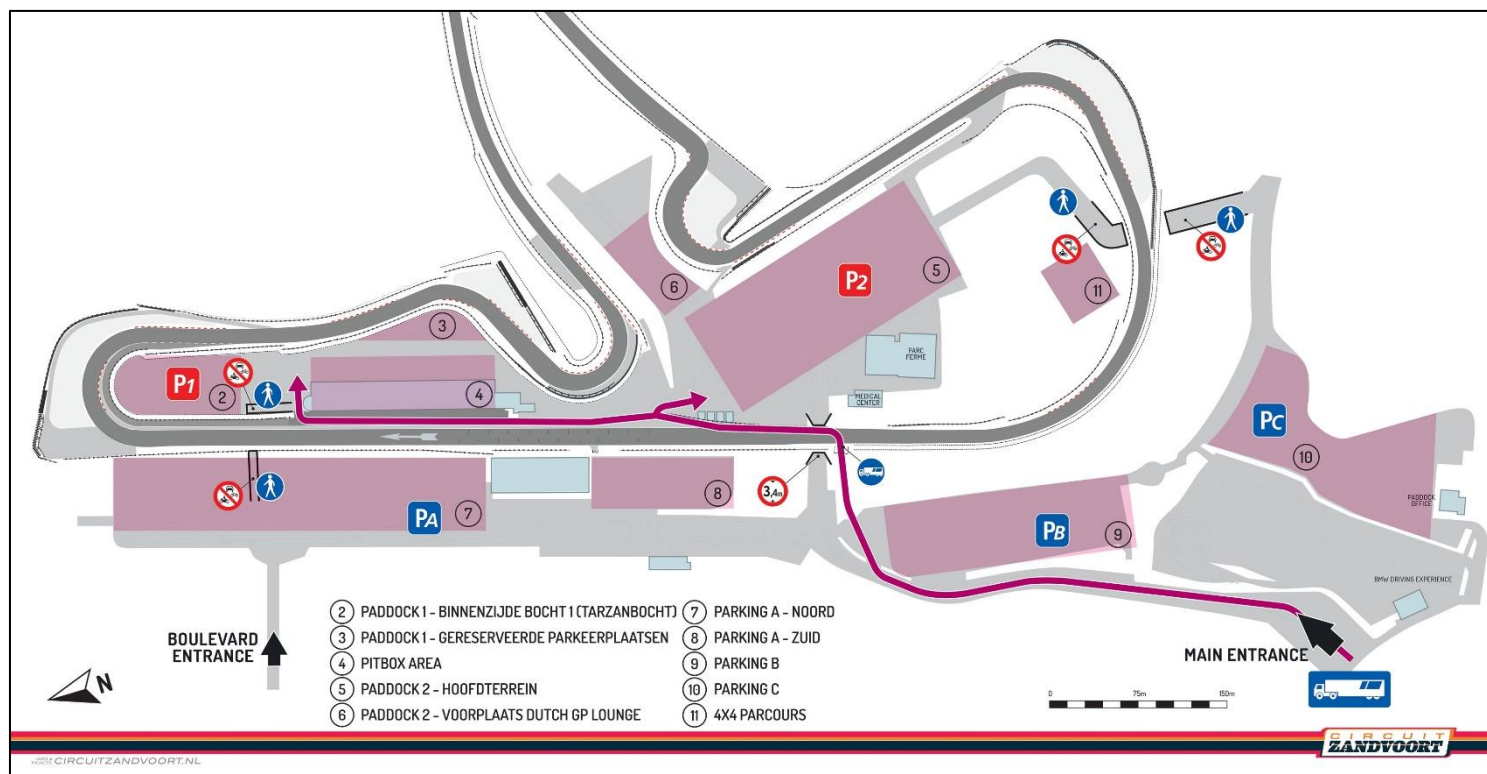
Dear customer,

Welcome at CM.com Circuit Zandvoort and thank you for your interest of renting the racetrack and one or more of our facilities!

In front of you is an informative document where the most important facilities are described including the corresponding procedures and ground rules. If you are planning to deviate from the standard procedures, you can contact your account manager to find a solution together. If you have any questions, please ask your account manager who is available to help you during the start up for your event.

CM.com Circuit Zandvoort consists of multiple areas that can be reserved for several activities. Below you will find an overview of the available areas.

1. Circuit (racetrack). 14 turns divided over 4.3 kilometer.
2. Paddock 1 – inside turn 1 ('Tarzan corner')
3. Paddock 1 – reserved parking lots
4. Pit garages area – the marked section behind the pit garage belongs to the respectively pit garage
5. Paddock 2 – main area
6. Paddock 2 – in front of the Dutch GP Lounge
7. Parking A – North
8. Parking A – South
9. Parking B
10. Parking C
11. 4x4 Parcours



### 1. Important telephone numbers

- Concierge 0031 6 31 53 46 34
- CM.com Circuit Zandvoort 0031 23 5 740 740

Opening hours circuit: 07:00 – 17:00 (or 2 hours after the last track activity)  
Reachability reception: Monday – Friday from 09:00 – 17:00  
Reachability concierge: Daily from 07:00 – 17:00 (or 2 hours after the last track activity)

### 2. Racetrack and paddocks

When renting the race track, an area will be assigned where you and your participants can stay during the day (2 hours prior until 2 hours after the duration of the track activity). Normally this will be Paddock 1, inside turn 1 (Tarzan corner). If there is another tenant that already is using this area, another location will be assigned for you and your participants. In this way the different participants will not cross each other. If you need more space than the standard assigned location, it is possible to rent more areas in advance. Beside the Paddock, we will reserve 2 parking lots for you on Paddock 1 – reserved parking lots (see previous picture). It is possible to rent electricity and water on the Paddocks, you can find more information at the paragraph 'electricity and water'.

### 3. Arrival and departure

Two hours prior to your time frame you are welcome at the assigned location. If you want to start earlier to have more time to prepare, you can consult this with your account manager.

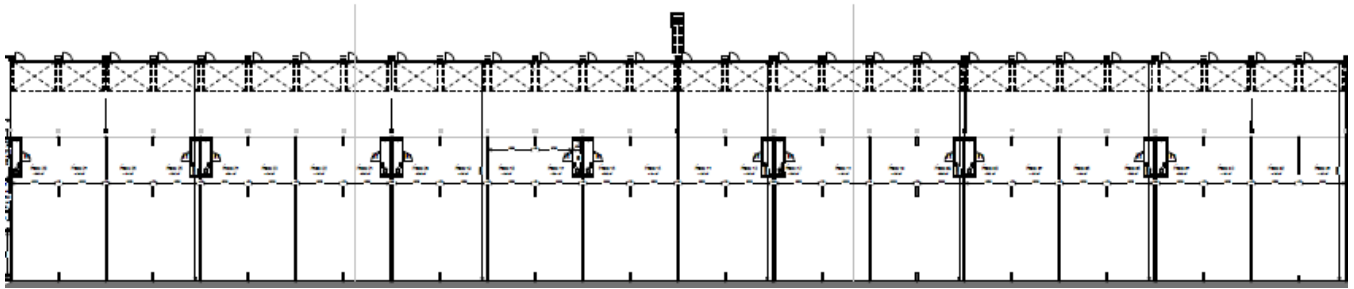
Please note that the vehicles that will enter the assigned location are not higher than 3.30 meter due to a tunnel at the Paddock area. If the vehicles are higher, they need to enter through the truck gate to get to the Paddock areas. This truck gate is located next to Parking B. The truck gate is only accessible when the racetrack is not used. In consultation with your account manager a time to access the truck gate can be established.

The end time of your time frame is the latest time that all the vehicles and materials are removed from the racetrack. This to secure that the following tent can start in time.

You are requested to leave the areas 2 hours, at the latest, after the ending of your time frame of renting the racetrack. In consultation the end time can be extended when possible. When extending after our standard opening hours, you need to consider additional costs of €35 (excluding VAT) per hour.

### 4. Pit garages

At CM.com Circuit Zandvoort there are 25 pit garages, each with the same size of 5 by 23 meters (115m<sup>2</sup>). The pit garages can be rented in advance by your account manager or at site by the concierge of CM.com Circuit Zandvoort. The rent includes electricity. It is not possible to fully close the pit garages at the inside. On the next page you will find an overview of the pit garages that shows the open area inside.



It is desirable to rent the pit garage in advance by your account manager. The marked section outside, behind the pit garages at the Paddock side, is included by the pit garages. It is therefore not allowed to park there if you did not rent a pit garage. In summary, the process of renting a pit garage is:

- Reserve the pit garage in advance at your account manager
- Collect key and pay the deposit (€100 per key with a maximum of €200 deposit) and the rent (€124 ex. VAT / €150 incl. VAT) at the reception of CM.com Circuit Zandvoort with your account manager or concierge.
- The pit garage needs to be clean when leaving
- After handing in the key you will receive the deposit back

The tenant of the racetrack has the first right to rent the pit garages if this is mentioned in the rent agreement. It is also possible to rent a pit garage if you're not a tenant of the racetrack. The pit garages can be rented per day. The costs of renting a pit garage is €124 ex. VAT / €150 incl. VAT per day. The pit garage is accessible from 07:00 until 2 hours after the latest track activity. If you want to rent the pit garage outside of this time frame, extra concierge hours will be charged.

In consultation it is possible to rent and enter the pit garage the evening before. The extra costs are 50% of the regular day rate. It is only possible to overstay in the pit garage if there is night surveillance.

The rent costs can be charged by invoice in advance, or cashless on the day itself.

#### 5. Business venues (VIP-lounges, Champions-lounge, and the Dutch Grand Prix-lounge)

If you would like to use one (or more) of our business venues, we would like to receive in an early stage a reservation. There are several [Business lounges](#) of 60m<sup>2</sup>, 90m<sup>2</sup> and 120m<sup>2</sup> which some are thematized. In addition, we also have the [Dutch Grand Prix Lounge](#) (located in the middle of the racetrack) and the [Champions Lounge](#) that are both usable for business events.

#### 6. Parking

Depending on the needed parking capacity, we reserve a parking area for your participants. Our guidelines are:

- Racetrack: Paddock 1 – inside turn 1 \*
- VIP-lounges: Parking A – North\*\*
- Dutch Grand Prix-lounge: Paddock 2 – in front of the DGP-lounge\*\*
- Champions-lounge: Parking C\*\*

\* *This area is included when renting the racetrack.*

\*\* *These parking areas can be rented separately when needed.*

## 7. Formula 1 Heineken Dutch Grand Prix 2021

As of June 2021, the preparations of the Dutch Grand Prix (DGP) will start. This means that constructions will be done on and around the racetrack. This will last until September 2021.

In close consultation with the production team of the DGP we will try to minimize the nuisance for everyone, and safety will be our priority. We will inform you detailly as soon as this information is available.

As of 5 July 2021, it will be a regularity for trucks to deliver materials for the racetrack. This means that from this moment the renting hours of the racetrack will change. There will be fixed times for crossing the racetrack and breaks.

|                  |               |
|------------------|---------------|
| Track activity   | 08:30 – 12:30 |
| Track activity   | 13:00 – 17:00 |
| Track activity   | 17:15 – 19:15 |
| Track activity   | 19:30 – 21:30 |
| Crossing / Break | 07:00 – 08:30 |
| Crossing / Break | 12:30 – 13:00 |
| Crossing / Break | 17:00 – 17:15 |
| Crossing / Break | 19:15 – 19:30 |
| Crossing / Break | 21:30 – 22:00 |

These times are applicable from 5<sup>th</sup> of July 2021 until 3<sup>rd</sup> of October 2021.

## 8. Safety

Motorsport is dangerous, we always need to consider that. However, we can make this as safe as possible. It is therefore, in consultation with you and based on the track activity, we will prescribe a safety package. The core of the activity will determine the type of safety package.

Make sure your drivers and co-drivers/instructors are protected at all times. Not only when it comes to personal gear and outfit, but also the vehicles. The minimum age of all drivers and co-drivers/instructors is 16, unless otherwise agreed with your account manager.

When the track activity starts, the safety packages is operational; track posts are staffed, Medical staff in position, Race control operational. If you would like to consult anything or have any questions during the day, you as an organizer are welcome at Race Control. This is accessible through the stairs next to the podium in the pitlane.

## 9. Noise

To reduce the nuisance for our environment there are some strict rules to produce noise at CM.com Circuit Zandvoort. Along the racetrack there are noise indicators that register every passing vehicle. Those measurements will be adding up to calculate an average during the day. The average number of noises cannot be higher than 81 dB(A). Per indicator a maximum of 93 dB(A) is set. These maximal values could be lower when there are a lot of participants on the racetrack. Chief Race Control will monitor both values and, if necessary, take action to prevent that the guidelines of the permit are not violated. It is important that you inform the participants about this subject during the briefing.

## 10. Maximal participants and start numbers

For cars, as well as motors, a maximal number of vehicles that will be on the racetrack at the same time is determined to guarantee the safety. Deviations are only allowed after permission of your account manager.

Track day cars:           70  
Track day motors:       40

During a track day it is obligated to provide every vehicle with a start number that is visible for the officials. By cars this can be a A4 paper with starting number placed on the windows on both sides of the car. With motorbikes this can be done with an A4 or A5 sized paper with the start number on front of the bike.

## 11. Damage

As organizer of the track activity you are responsible for the damage to the (race)track and other rent objects of CM.com Circuit Zandvoort. For example, the tire stacks, asphalt, guardrail, electricity unit, doors, etc. At all times, the damage(s) need to be passed along your account manager. Damages will be handled on site with an accident report. You as an organizer are also responsible for the damages that the participants/guests causes. We advise you to brief this to your participants.

## 12. Night surveillance

It is possible for your participants/guests to stay overnight at our closed areas. This is only possible when there is a night security guard from 19:00 – 07:00. If you would like to make use of night surveillance, we would like to receive this request 14 days prior to the event so a security guard can be arranged. The costs of a night security guard are €400,00 (ex. VAT) per night (12 hours consecutive). We will charge an additional cost of 3 x € 32,50 for 3 hours of cleaning to make sure all your facilities are clean.

## 13. Electric vehicles

Electric vehicles and motors are basically not allowed at the racetrack. Permission to use electric vehicles can be done in writing at by your account manager. Only after receiving the permission the vehicle is allowed at the racetrack.

It is not allowed to charge electric vehicles in the pit garages. This is only allowed outside.

## 14. Water

It is possible to rent water supply at the Paddock areas. We would like to receive the request to make use of any water supplies 14 days before the track activity so we can connect it. The costs are €100 (ex. VAT) per unit. The water unit is usable 2 hours before and 2 hours after the track activity.

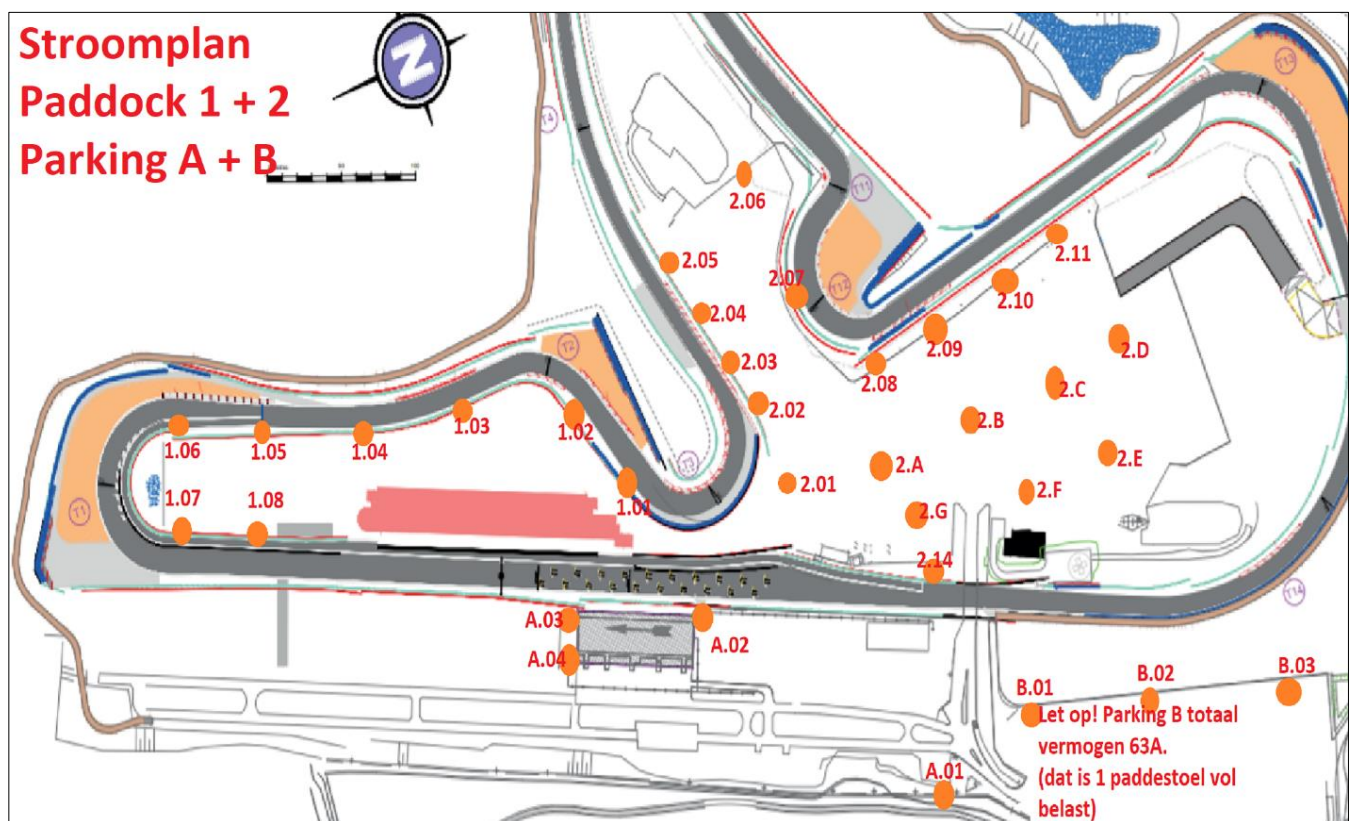
## 15. Toilets

There are toilets on the VIP gallery and next to the reception CM.com Circuit Zandvoort that are opened 2 hours before and 2 hours after your timeframe. There are also toilets available on Paddock 2 and by the grandstand. These can be opened on your request. The additional costs (use and cleaning) will be charged on the invoice.

## 16. Electricity

Electricity (200 and 400 volt) are available in all the pit garages. If you would like to use electricity at another location like the Paddock areas, we can arrange that. We would like to receive this request 14 days in advance of the event. The costs per electricity unit are €100 (ex. VAT) per unit, including the use during the day. The electricity unit is usable 2 hours before and 2 hours after the track activity.

Below you will find an overview of the locations of the electricity units.



## 17. Catering

Providing and selling of food and beverages to your participants and visitors during your track activity can only be managed by CM.com Circuit Zandvoort Hospitality. Your account manager can provide you with our food book with all the possibilities.

## 18. Additional information and useful links

Besides the basis and most used facilities mentioned above, there are more facilities and materials that can be rented at our venue. For example, barriers or but also more VIP-lounges or a safety car. Your account manager can inform you about all the possibilities.

Trough the following links you will find several informational documents. We would like to advise you to look those through.

- [Terms and Conditions](#)
- [Paddock regulations](#)
- [House rules](#)

### We are there for you!

No day, guest or customer is the same. This applies to you as well as to us. If you have any questions or requests, you can always contact your account manager. The sky is the limit. We are looking forward working with you and to create an unforgettable day!

Important note: Due to the situation surrounding the Coronavirus (COVID-19), these additional protocols will apply as of 11 May 2020: [Protocol Corona Prevention Circuit Zandvoort – update \(PDF\)](#).

We are looking forward to welcome you!

Team CM.com Circuit Zandvoort.